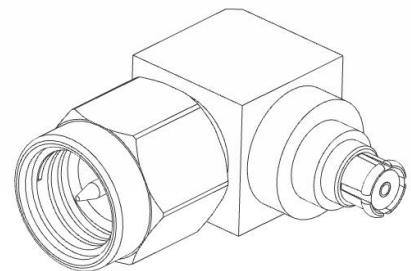




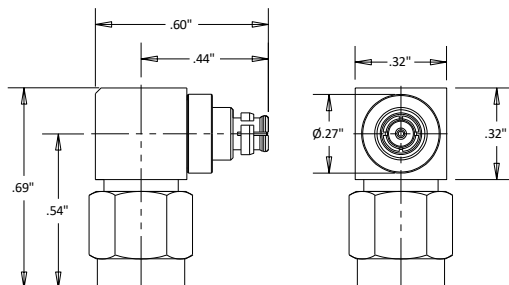
## C4175 SMA/Male to SMP/Female Right Angle Adapter 18 GHz

Rev 000

<b>Electrical</b>	
Frequency	0-18 GHz
VSWR	1.30 Max
Impedance	50 Ohms
<b>Mechanical</b>	
SMA & SMP Interface per	MIL-STD-348B
Operating Temperature	-45°C to +120°C
<b>Materials</b>	
Body(SMA)	Passivated Stainless Steel
Body(SMP)	Au plated BeCu
Contact Plating	Au 50μ" Min
Contact	BeCu
Dielectric	PTFE
ROHS Compliant	



### Outline



#### Dimensional Tolerances

.X	±.030
.XX	±.010
.XXX	±.005

### Typical Data

