



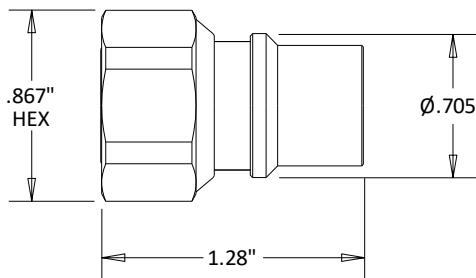
C4310-2 4.3/10 Male 2 Watt Termination 6 GHZ

Rev 000

Electrical	
Frequency	0-6 GHz
VSWR	1.20 Max
Impedance	50 Ohms
Power Handling	2 Watts at 25°C Derated Linearly to 1W at 100°C
Peak Power	250 Watts Max
Mechanical	
Operating Temperature	-45°C to +100°C
Materials	
Body	Trimetal(Cu/Sn/Zn)
Contact	Brass
Contact Plating	Au 30μ" Min
Dielectric	PTFE
IP67 Rated(Mated condition)	
ROHS Compliant	



Outline



Dimensional Tolerances

.X	±.030
.XX	±.010
.XXX	±.005

Typical Data

