



C4412 2.2/5-Female to 2.2/5-Female Bulkhead Adapter 6 GHZ

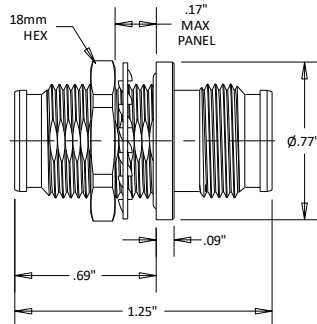
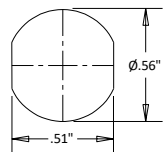
Rev 002

Electrical	
Frequency	0-6 GHZ
VSWR	1.20 Max
Impedance	50 Ohms
PIM(3 rd)	-160 dBc Max with 2 CW Tones @ 43 dBm
Mechanical	
2.2/5 Interface Per	IEC 61169-66
Operating Temperature	-45°C to +125°C
Materials	
Body	Tri-Alloy plated Brass
Contacts	BeCu
Contact Plating	Silver
Dielectric	PTFE
ROHS Compliant	



Outline

RECOMMENDED PANEL CUTOUT



Dimensional Tolerances

.X	±.030
.XX	±.010
.XXX	±.005

Typical Data

