



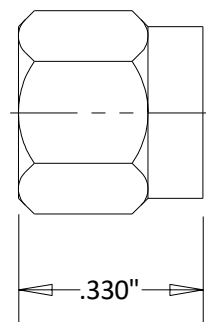
C4851 SMA/Male Coaxial Short 18 GHZ

Rev 001

Electrical	
Frequency	0-18 GHZ
Mechanical	
SMA Interface per	MIL-STD-348B
Materials	
Body	Passivated Stainless Steel
Contacts	BeCu per ASTM-B-196
Contact Plating	Au Per MIL-G-45204
Dielectric	PTFE per ASTM-D-1710
ROHS Compliant	



Outline



Dimensional Tolerances

.X	±.030
.XX	±.010
.XXX	±.005