



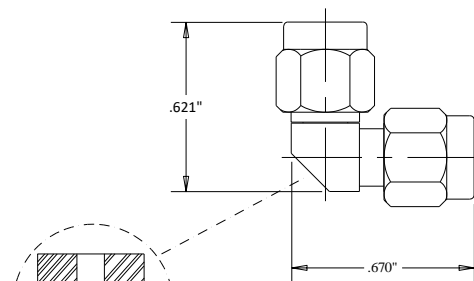
## C7051 2.92/Male to 2.92/Male Right Angle Adapter 40 GHZ

Rev 000

<b>Electrical</b>	
Frequency	0-40 GHZ
VSWR	1.25 Max
Impedance	50 Ohms
<b>Mechanical</b>	
2.92 Interface per	MIL-STD-348B
Operating Temperature	-55°C to +100°C
<b>Materials</b>	
Body	Passivated Stainless Steel
Contacts	BeCu per ASTM-B-196
Contact Plating	Au Per MIL-G-45204



### Outline



#### Dimensional Tolerances

.X	±.030
.XX	±.010
.XXX	±.005

SWEPT INTERNALLY  
WITH RECTANGULAR  
HOUSING