



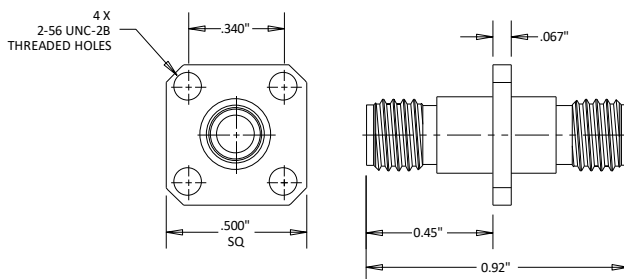
C7727 3.5/Female to 3.5/Female Flange Adapter 33 GHz with 2-56 Tapped Holes

Rev 000

Electrical	
Frequency	0-33 GHz
VSWR	1.15 Max
Impedance	50 Ohms
Mechanical	
3.5 Interface per	IEEE STD 287
Materials	
Body	Passivated Stainless Steel
Contacts	BeCu
Contact Plating	Au 50 μ " Min
ROHS Compliant	



Outline



Dimensional Tolerances

.X	$\pm .030$
.XX	$\pm .010$
.XXX	$\pm .005$

Typical Data

