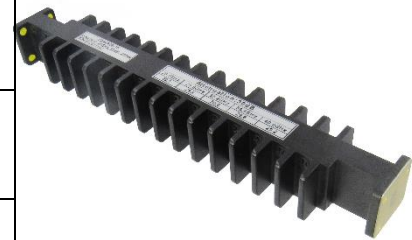




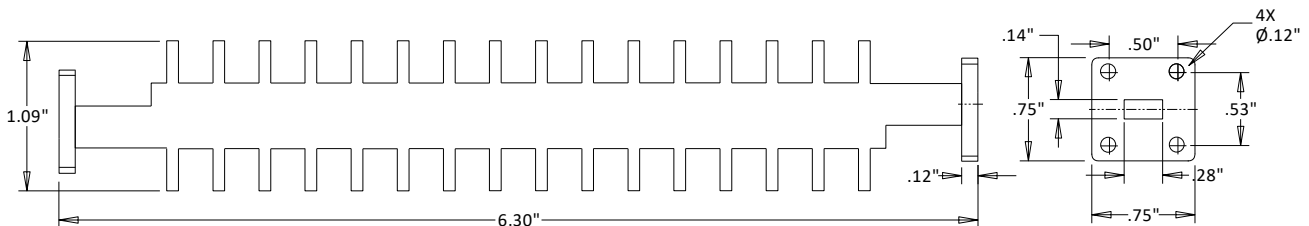
## CAWR28-30 WR28 30 dB Waveguide Attenuator 26.5-40 GHZ

Rev 000

<b>Electrical</b>	
Frequency	26.5-40 GHZ
VSWR	1.20
Impedance	50 Ohms
Attenuation	30 ± 1.5 dB
Power Handling	200 Watts
<b>Mechanical</b>	
Waveguide Size	WR28
Flange Size	IEC UBR320
<b>Materials</b>	
Body	Black Painted Aluminum
Internal Construction	Conductive Oxidation
ROHS Compliant	



### Outline



#### Dimensional Tolerances

.X	±.030
.XX	±.010
.XXX	±.005