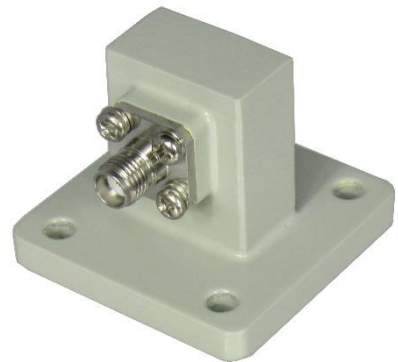




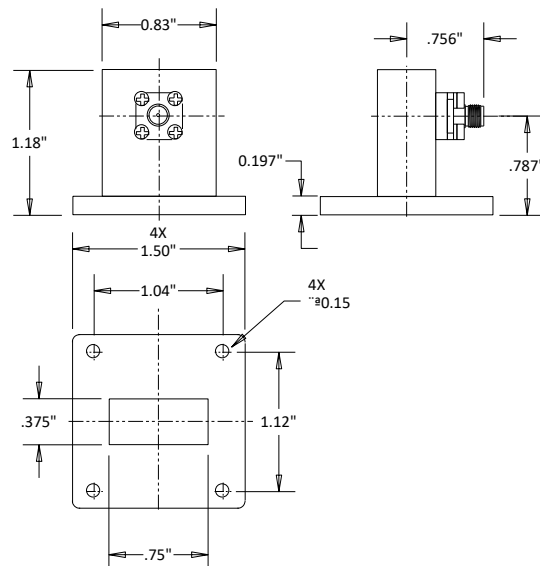
CWR75S SMA/Female to WR75 Waveguide to Coax Adapter

Rev 000

Electrical	
Frequency	10-15 GHz
VSWR	1.25
Impedance	50 Ohms
Theoretical Insertion Loss	0.25 dB Max
Mechanical	
SMA Interface per	MIL-STD-348B
Materials	
Body(SMA)	Passivated Stainless Steel
Body	Al/Cu
Contacts(SMA)	BeCu
Contact Plating	Au



Outline



Dimensional Tolerances

.X	±.030
.XX	±.010
.XXX	±.005