



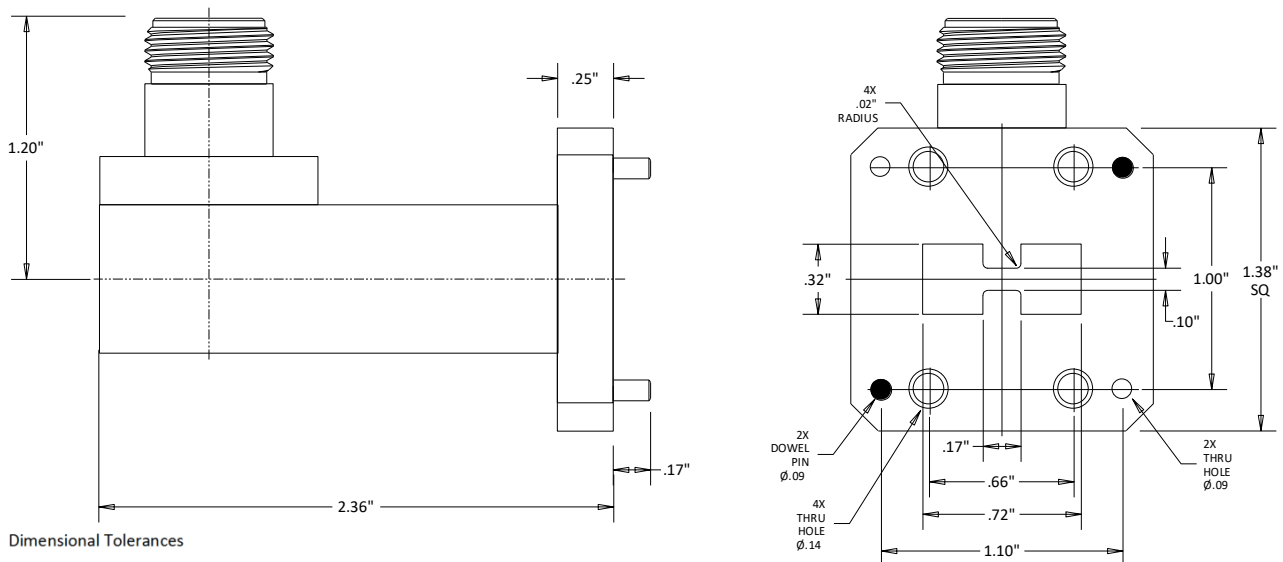
CWRD650NC N/Female to WRD650 Coaxial to Waveguide Adapter 6.5-18 GHZ

Rev 000

Electrical	
Frequency	6.5-18 GHZ
VSWR	1.25 Max
Impedance	50 Ohms
Mechanical	
N Interface per	MIL-STD-348B
Materials	
Body	Al
Finish	Black Painted, Electric Conductive Oxidation
Body(Type N)	Passivated Stainless Steel
Contact	BeCu
Contact Plating	Au 50 μ " Min
ROHS Compliant	



Outline



Dimensional Tolerances

.X	\pm .030
.XX	\pm .010
.XXX	\pm .005