



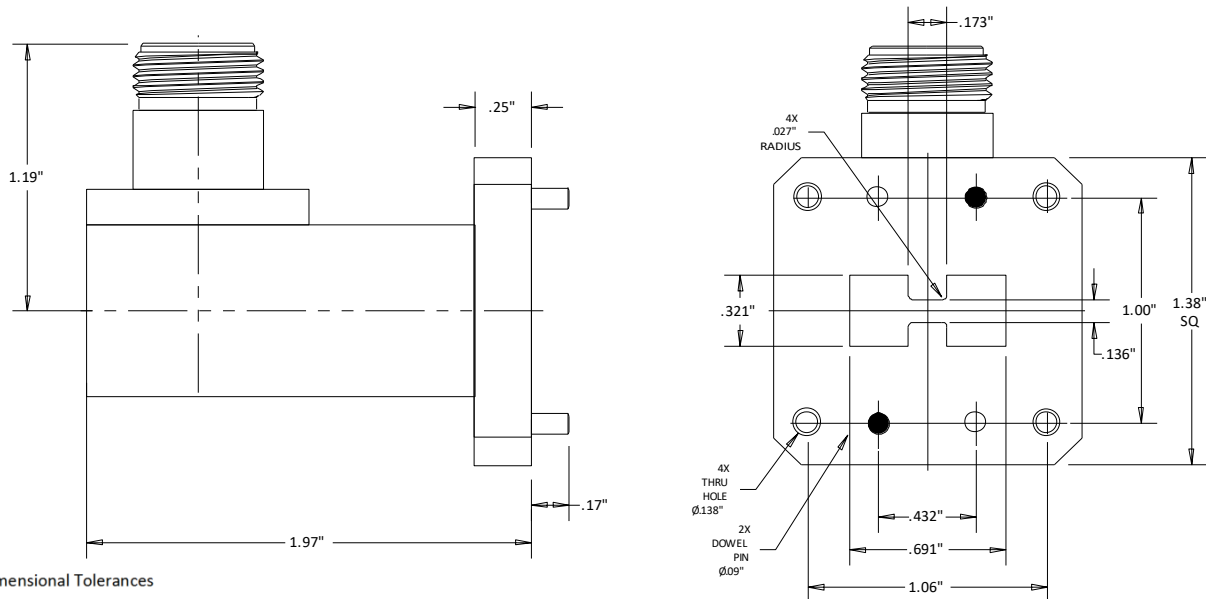
## CWRD750NB N/Female to WRD750 Coaxial to Waveguide Adapter 7.5-18 GHz

Rev 001

|                   |  |
|-------------------|--|
| <b>Electrical</b> |  |
| Frequency         | 7.5-18 GHz                                   |
| VSWR              | 1.30 Max                                     |
| Impedance         | 50 Ohms                                      |
| <b>Mechanical</b> |  |
| N Interface per   | MIL-STD-348B                                 |
| <b>Materials</b>  |  |
| Body              | Al   |
| Finish            | Black Painted, Electric Conductive Oxidation |
| Body(Type N)      | Passivated Stainless Steel                   |
| Contact           | BeCu   |
| Contact Plating   | Au 50μ" Min                                  |
| ROHS Compliant    |  |



### Outline



Dimensional Tolerances

|      |       |
|------|-------|
| .X   | ±.030 |
| .XX  | ±.010 |
| .XXX | ±.005 |