



CX1416 N/Male Solder/Clamp Connector for RG402(.141) 18 GHZ

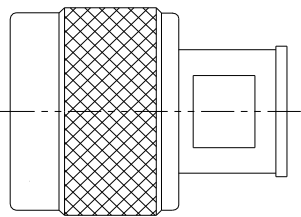
Rev 000

Electrical	
Frequency	0-18 GHZ
Impedance	50 Ohms
Mechanical	
N Interface per	MIL-STD-348B
Operating Temp Range	-55°C to +125°C
Materials	
Body	Passivated Stainless Steel
Contacts	Brass
Contact Plating	Au 30μ" Min
ROHS Compliant	

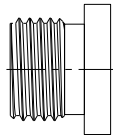


Outline

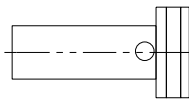
CONNECTOR BODY



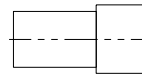
CLAMP NUT



SOLDER FERRULE



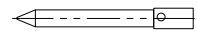
INSULATOR



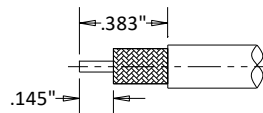
ULTEM STOP



SOLDER PIN



STRIPPING DIMENSIONS



Dimensional Tolerances

.X	±.030
.XX	±.010
.XXX	±.005