



CX4504 SMP/Female Solder Connector for RG405(.086) 40 GHZ

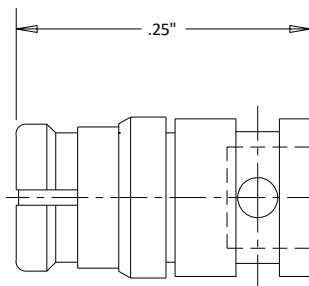
Rev 000

Electrical	
Frequency	0-40 GHZ
Impedance	50 Ohms
Mechanical	
SMP Interface per	MIL-STD-348B
Materials	
Body	Au Plated BeCu
Contacts	BeCu
Contact Plating	Au 30μ" Min
ROHS Compliant	



Outline

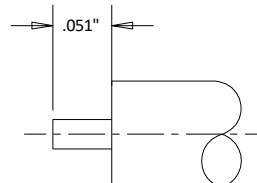
CONNECTOR BODY



CENTER CONTACT



STRIPPING DIMENSIONS



Dimensional Tolerances

.X	±.030
.XX	±.010
.XXX	±.005